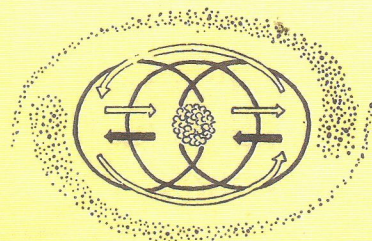


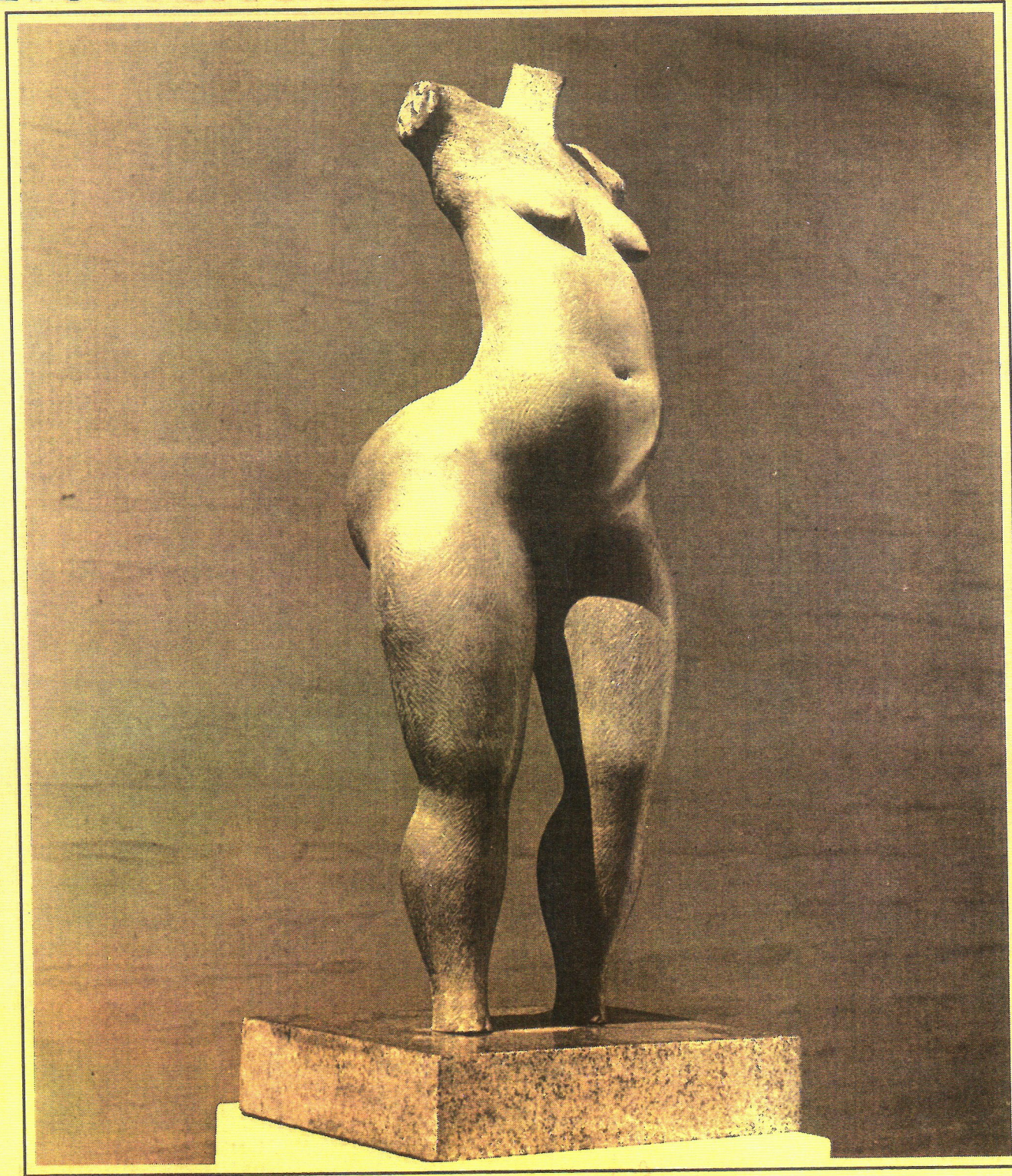
The SIGNAL



VOLUME I, ISSUE NO. 1

Network International

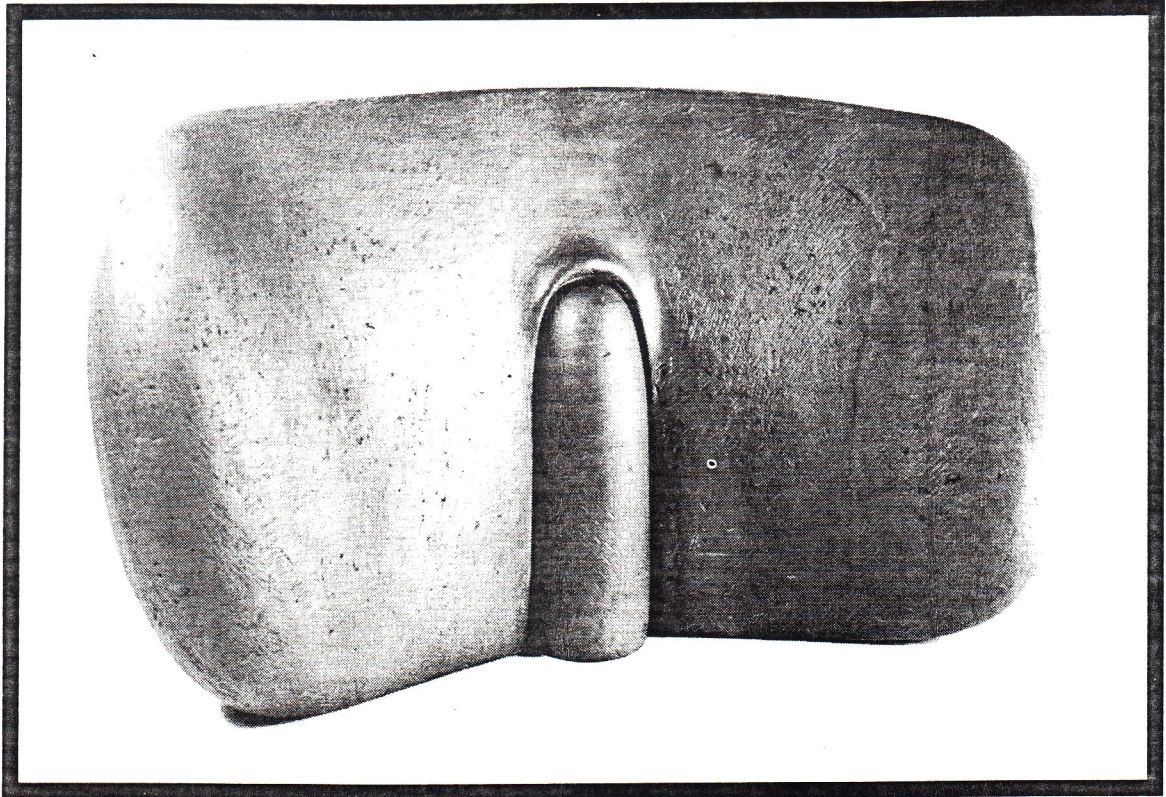
Literature - Art - Ideas



DONALD LOCKE: CONTINUING THE DIALOGUE

An explorer of art and all its traditions, Donald Locke seems to be looking both into history and the future, weighing the creations of today against their predecessors and speculating on what may be to come. His own work sits firmly at the center of our often nervous chapter in art history. It is reassuring and confident, never looking for the quick fix, or to draw attention through a thin scattering of glitter. Talking to Donald about painting is a luxury. He is always ready to express his enthusiasm for 'painterly' qualities, such as imaginative composition or the feel of paint on a surface. He will look at a painting as a three dimensional object, aware of the extra life the right texture brings. In his sculpture, Donald Locke invests the same attention in surfaces, seeking to give his forms the best possible finish. Each piece is thoughtful and carries the weight of what has gone before, but with the added qualities that personal references and sensitivity bring. The dialogue continues in multiple directions, not only with art and its evolution, but with the deeper instincts from which the artist draws an individual style. This is where particular scenes and memories exist; a repository that is off limits to the viewer and which represents whatever has been visually important to the person in question. In Donald Locke's case, shapes and textures from a well travelled life are stored there.

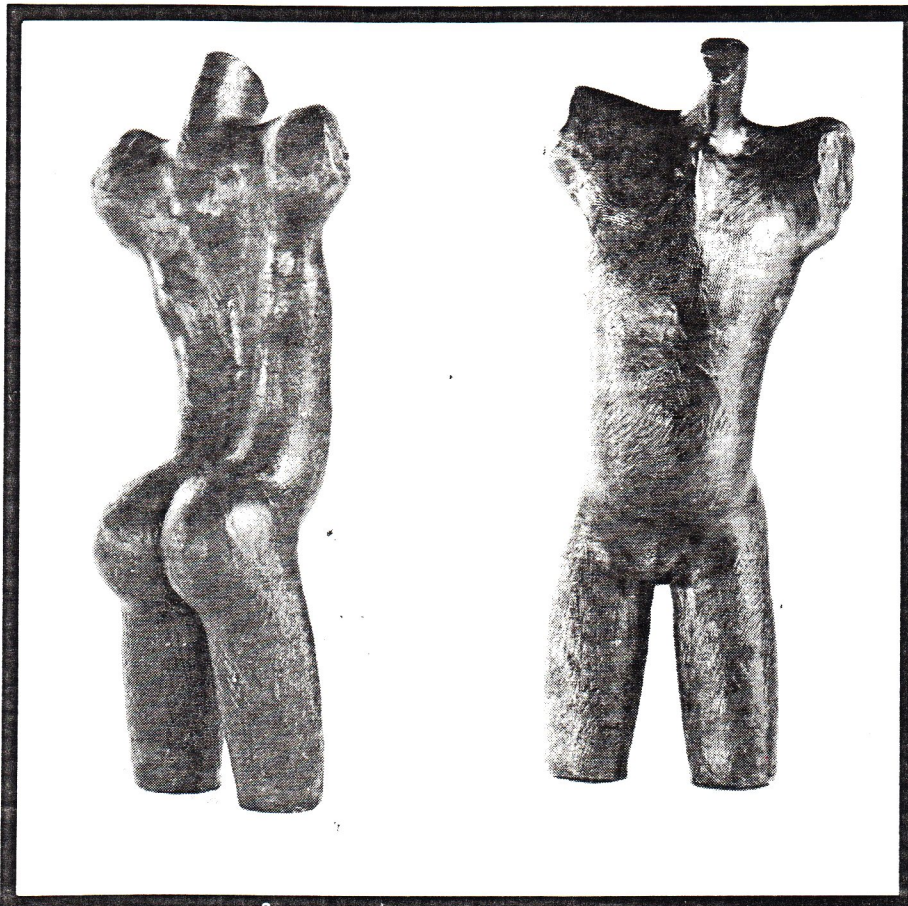
That life began in Stewartville, Guyana, in 1930. Donald lived and worked in London from 1971 to 1979, and came to the U.S.A. in 1979 after receiving a Guggenheim Fellowship in Sculpture. Before London, he spent time elsewhere in England, and several years in Edinburgh. From a village between two sugar plantations, Donald Locke has moved on to show in Edinburgh, London, Milan, as well as several more recent exhibitions in Arizona, and participated in international exhibitions in Sao Paolo, Columbia, Budapest, Lagos, Vallauris, Faenza, and Campione D'Italia. His earliest award was the Gold Medal First Award, Working People's Art Class, Guyana, in 1953 and in 1986 came the latest in an extensive list, with a Biennial Purchase Prize, Studio Museum in Harlem, New York. Donald Locke lives today in Phoenix, Arizona, where his sculpture and criticism ring sophisticated notes.



MAESTA '77

(from the Biomorphic Series, 1967-77; private collection, Milan Italy)

Donald Locke



YOUNG APOLLO

Donald Locke

(wax study; 12 inches tall)